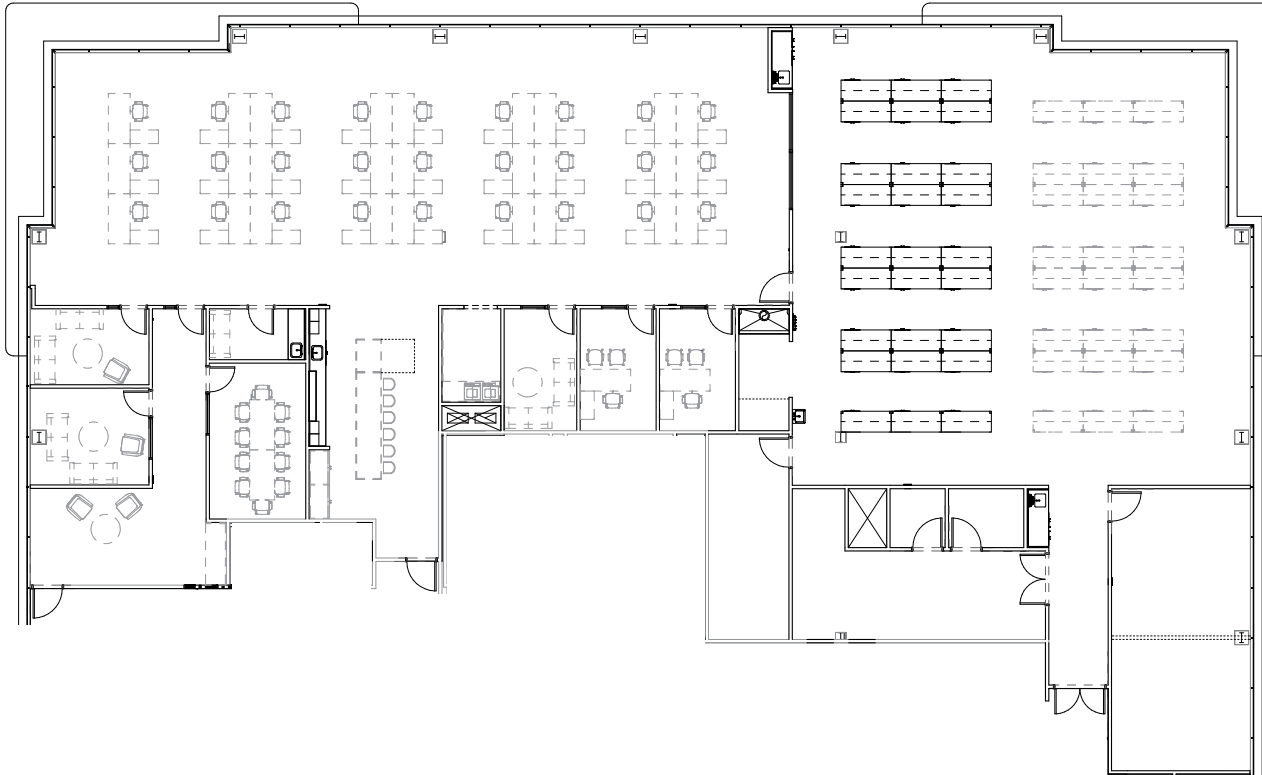


NEW SPEC LAB SUITE - SEPTEMBER 2021 MOVE IN READY

SUITE 201 - ±12,347 SF



KEY PLAN



SITE PLAN



HYPOTHETICAL FLOORPLAN

For more Information, please contact:

BEN PAUL
+1 650 401 2123
ben.paul@cushwake.com
LIC #01210872

MARC POPE
+1 650 401 2131
marc.pope@cushwake.com
LIC #01474483

MIKE MORAN
+1 650 245 2446
mike.moran@cbre.com
LIC #00901003

CHARLIE MORAN
+1 650 288 8605
charlie.moran@cbre.com
LIC #02102431

